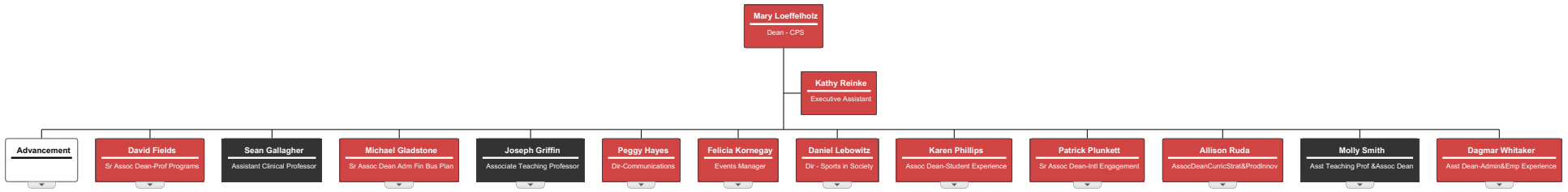


The College of Professional Studies



BOX TYPES

- Assistant
- Staff
- Full-Time Faculty
- Placeholder box



BOX TYPES

Staff

Placeholder box



Advancement

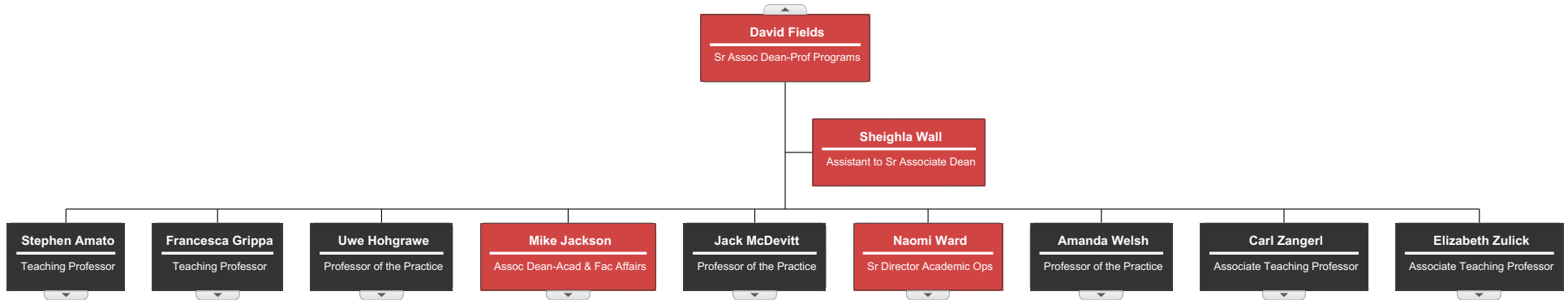
Michael Kushmerek
Director - Major Gifts

The College of Professional Studies



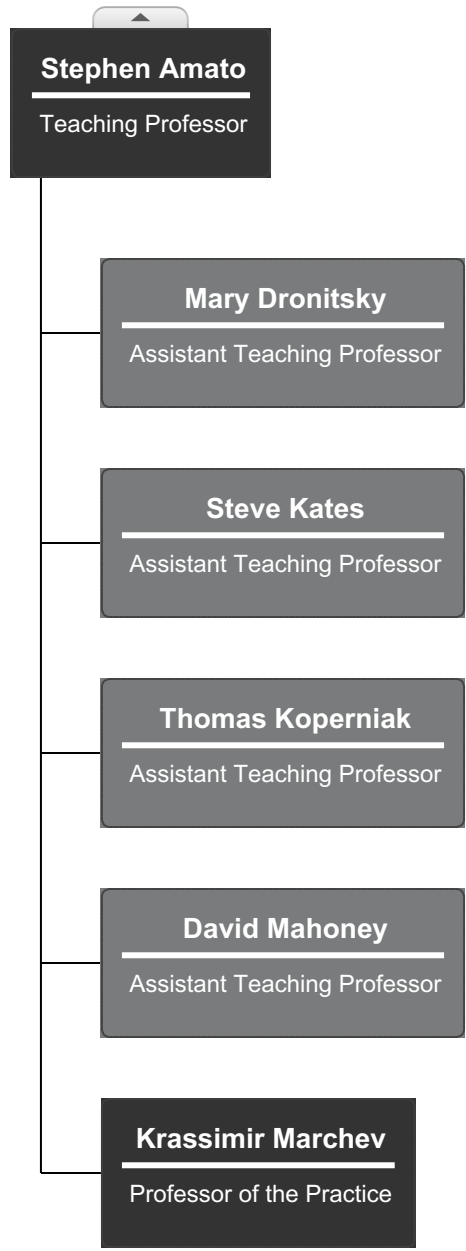
BOX TYPES

- Assistant
- Staff
- Full-Time Faculty



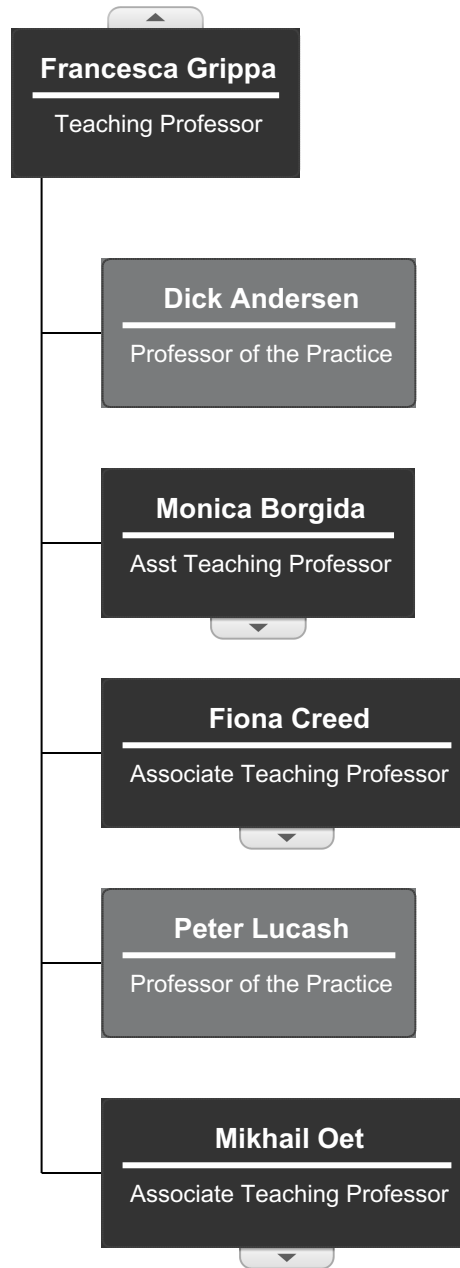
BOX TYPES

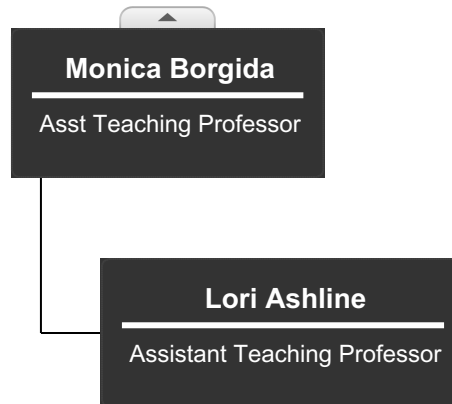
- Full-Time Faculty
- Half-Time Faculty



BOX TYPES

- Full-Time Faculty
- Half-Time Faculty

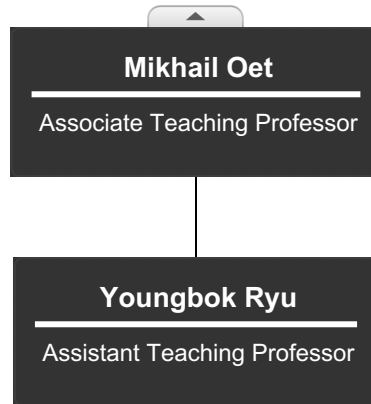




BOX TYPES

- Full-Time Faculty
- Half-Time Faculty





The College of Professional Studies

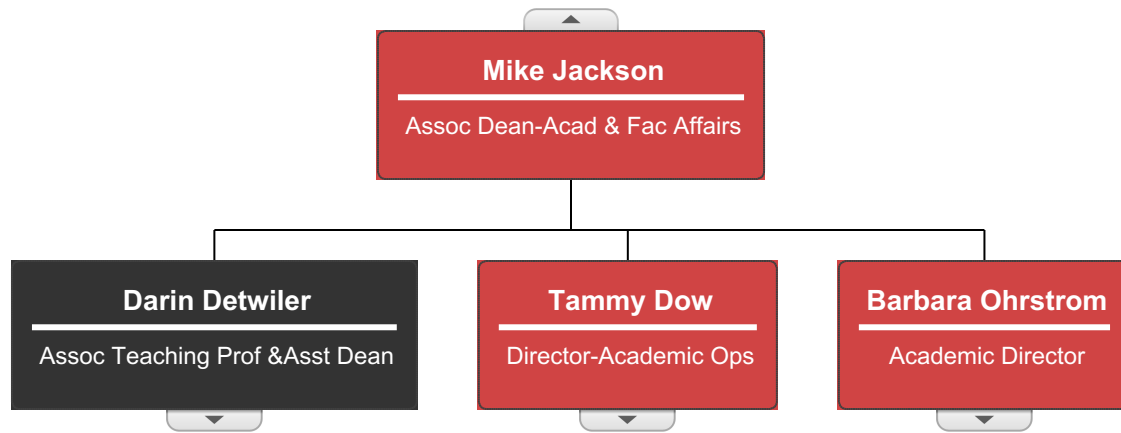


BOX TYPES
Full-Time Faculty



BOX TYPES

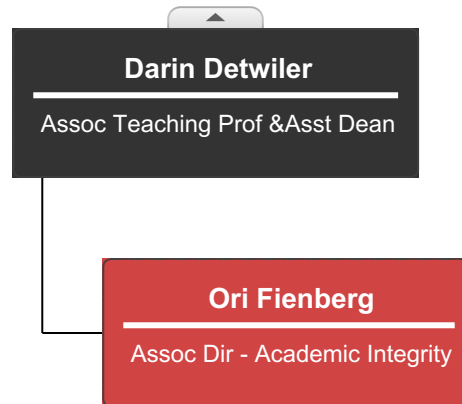
Staff
Full-Time Faculty

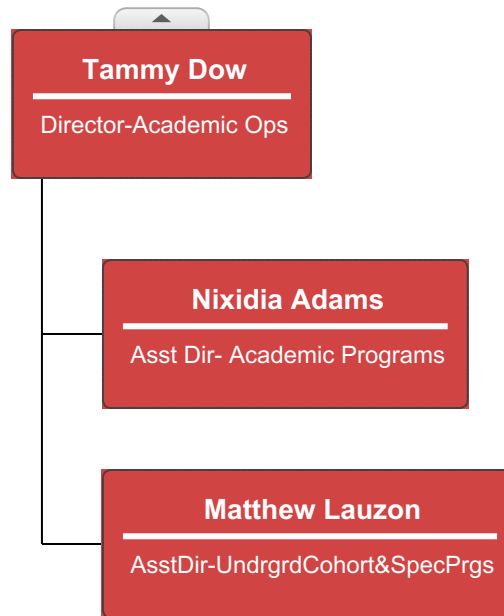


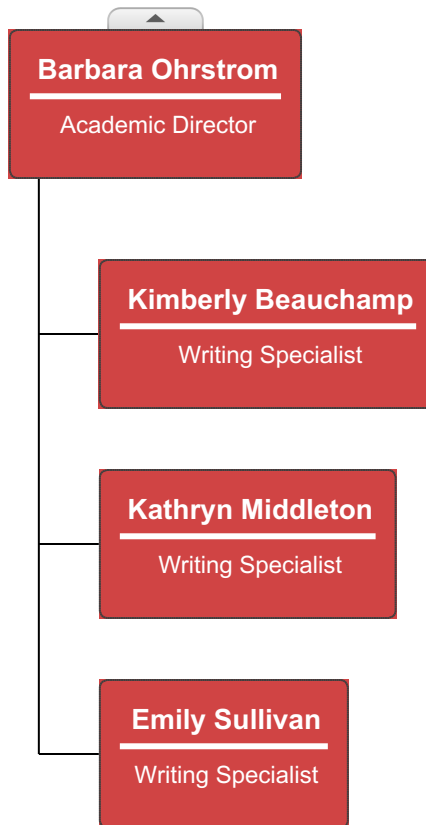
BOX TYPES

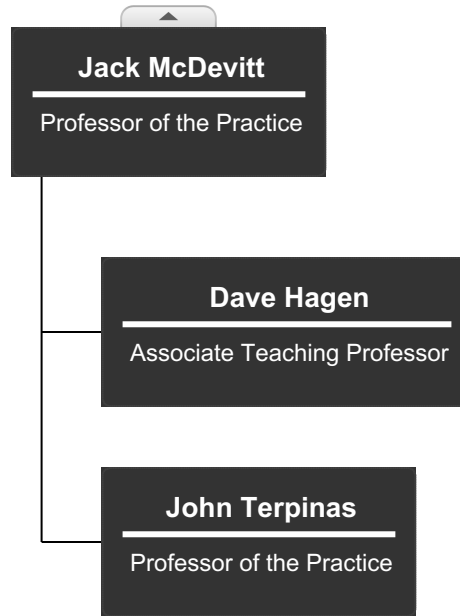
Staff

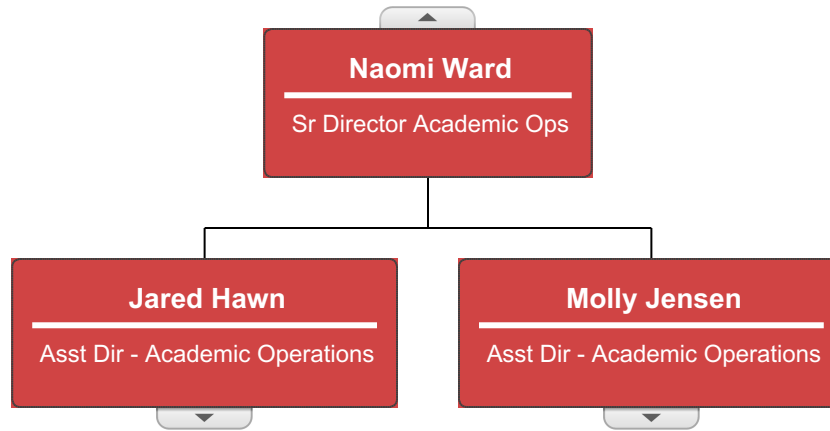
Full-Time Faculty

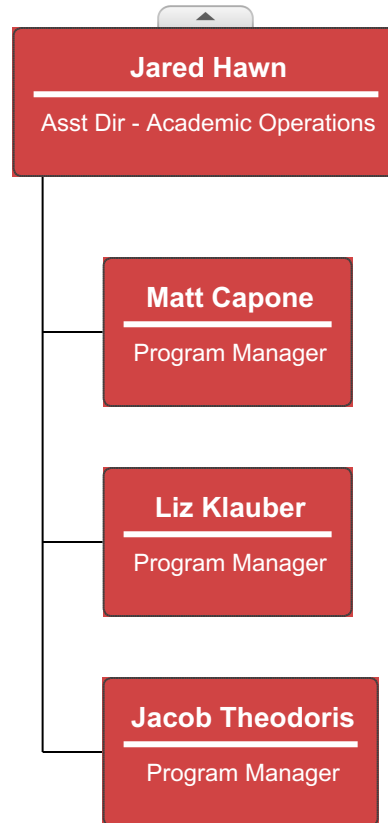






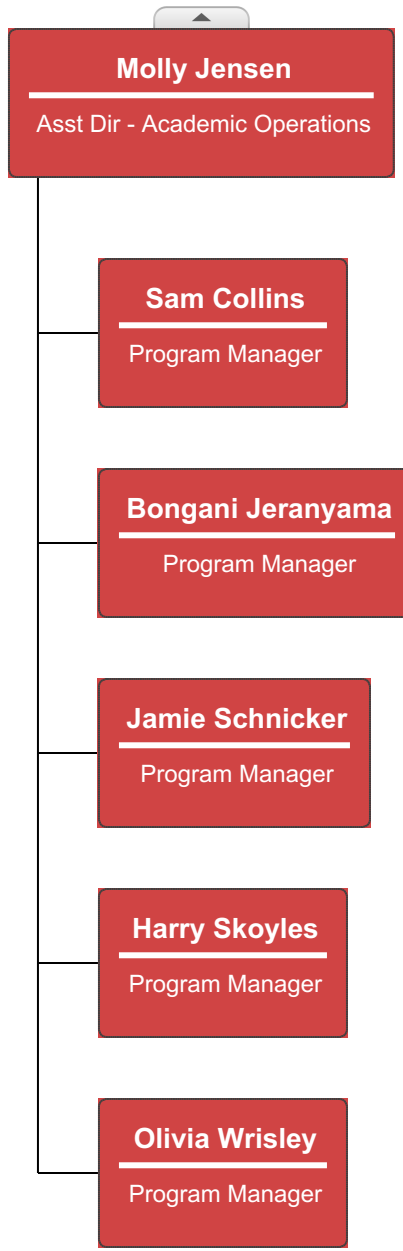


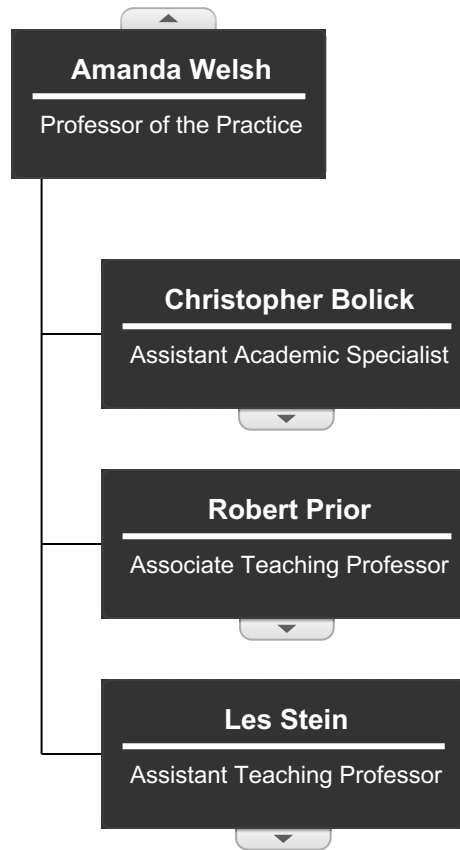




BOX TYPES

Staff



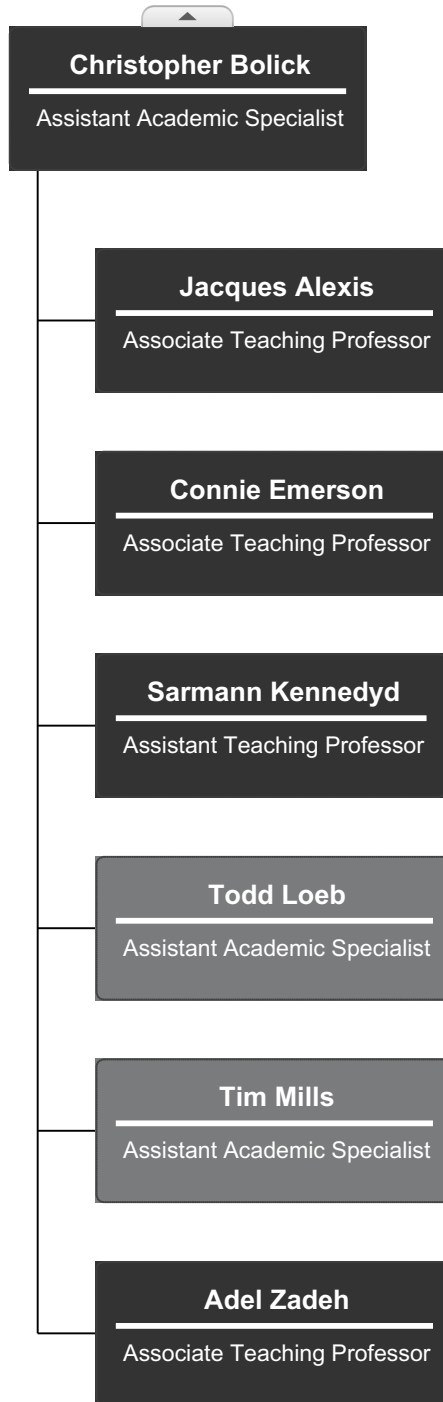


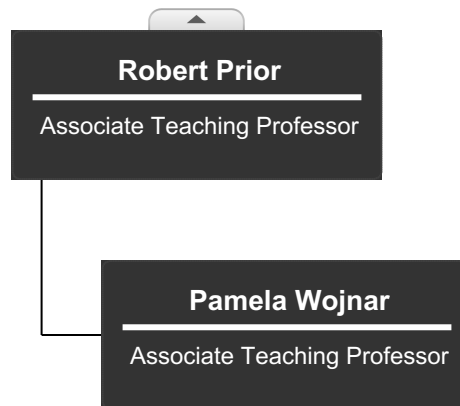
The College of Professional Studies



BOX TYPES

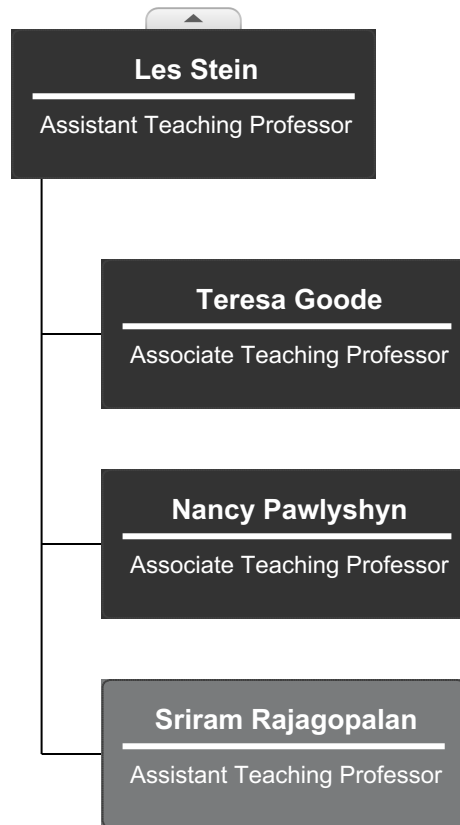
- Full-Time Faculty
- Half-Time Faculty

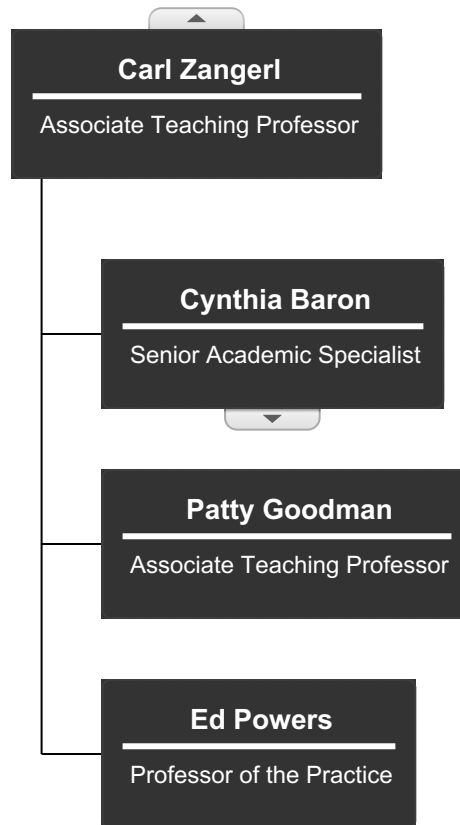


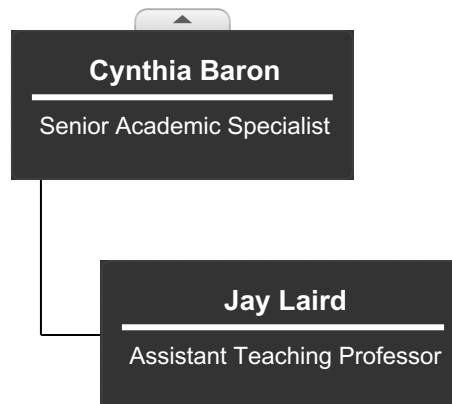


BOX TYPES

- Full-Time Faculty
- Half-Time Faculty

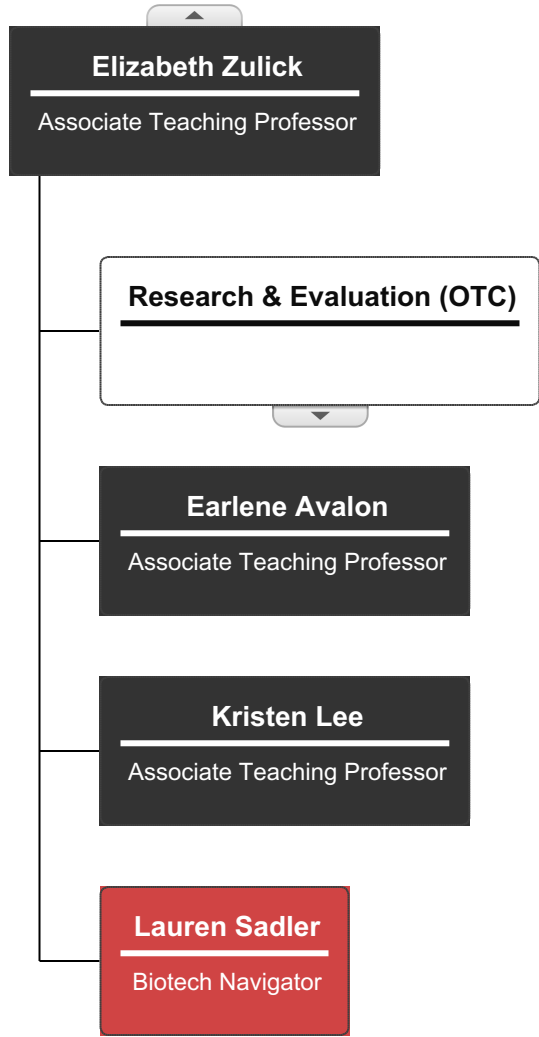






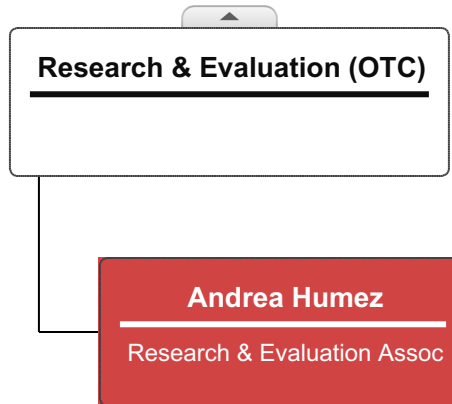
BOX TYPES

- Staff
- Full-Time Faculty
- Placeholder box



BOX TYPES

Staff
Placeholder box

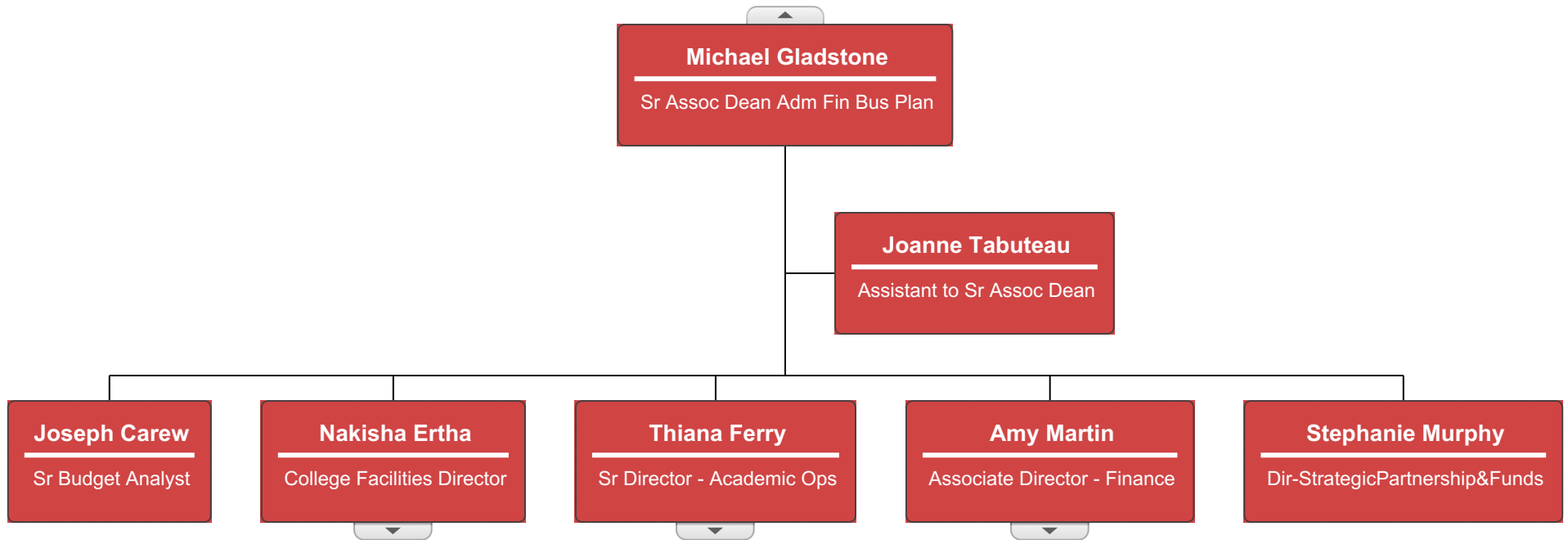


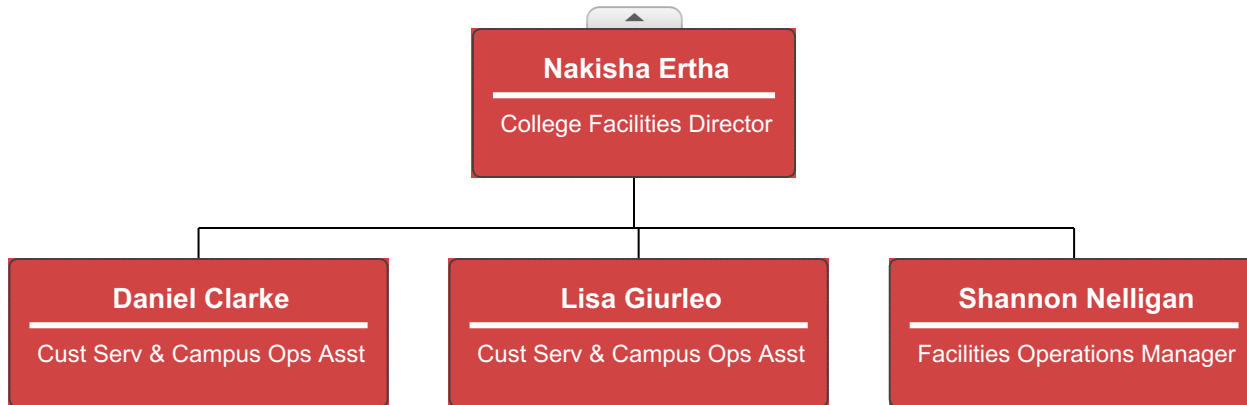
The College of Professional Studies

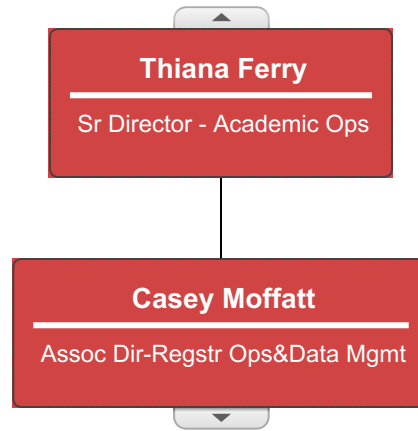


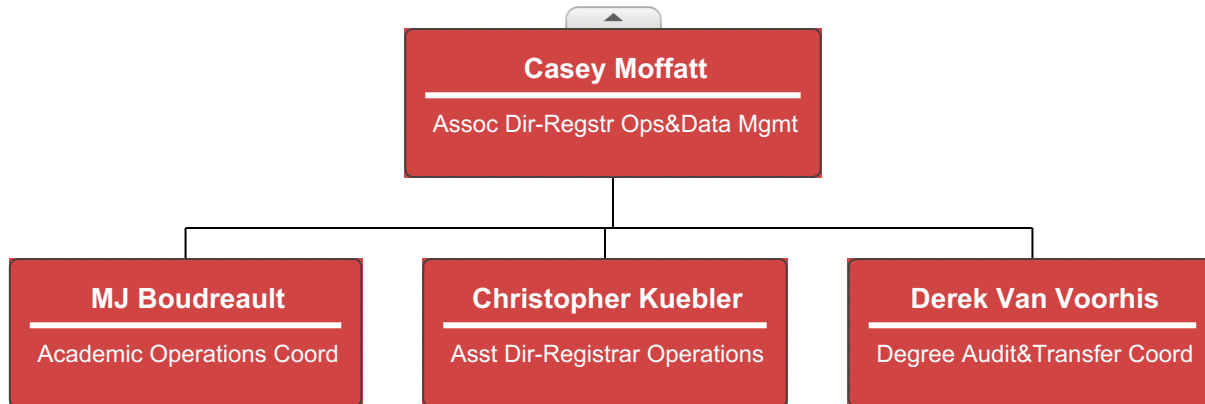
BOX TYPES

- Assistant
- Staff



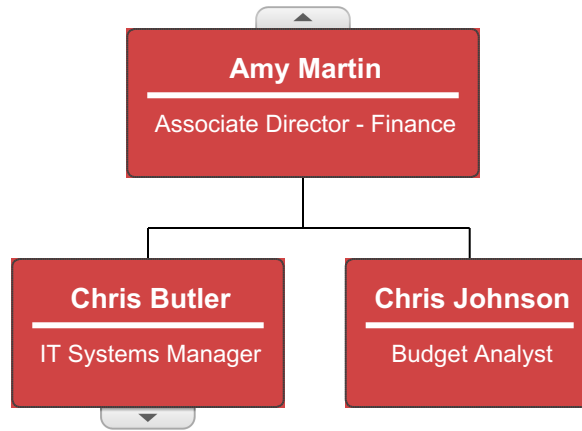


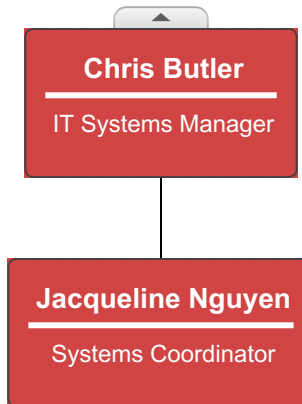




BOX TYPES

Staff



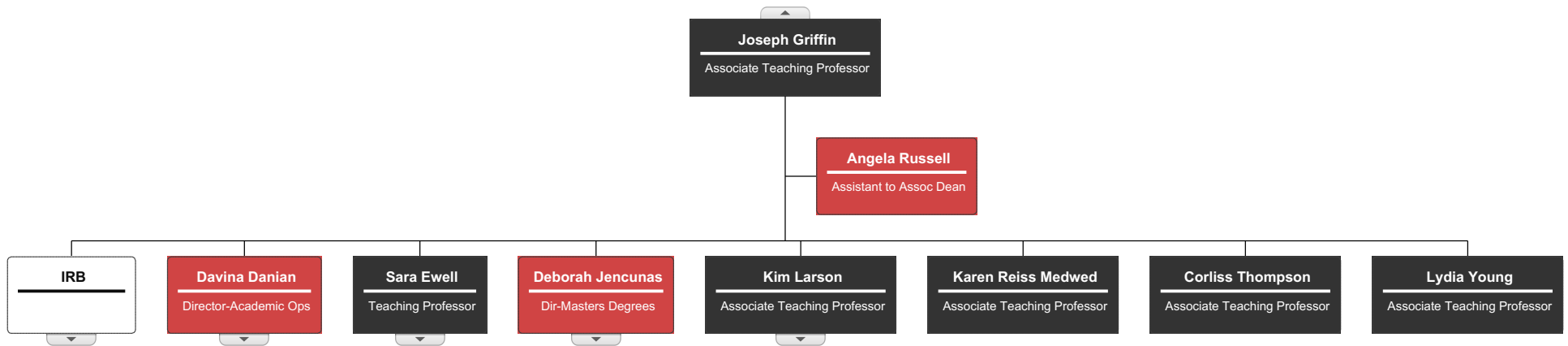


The College of Professional Studies



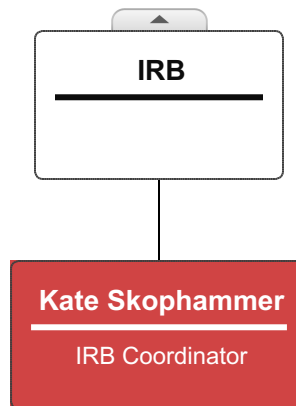
BOX TYPES

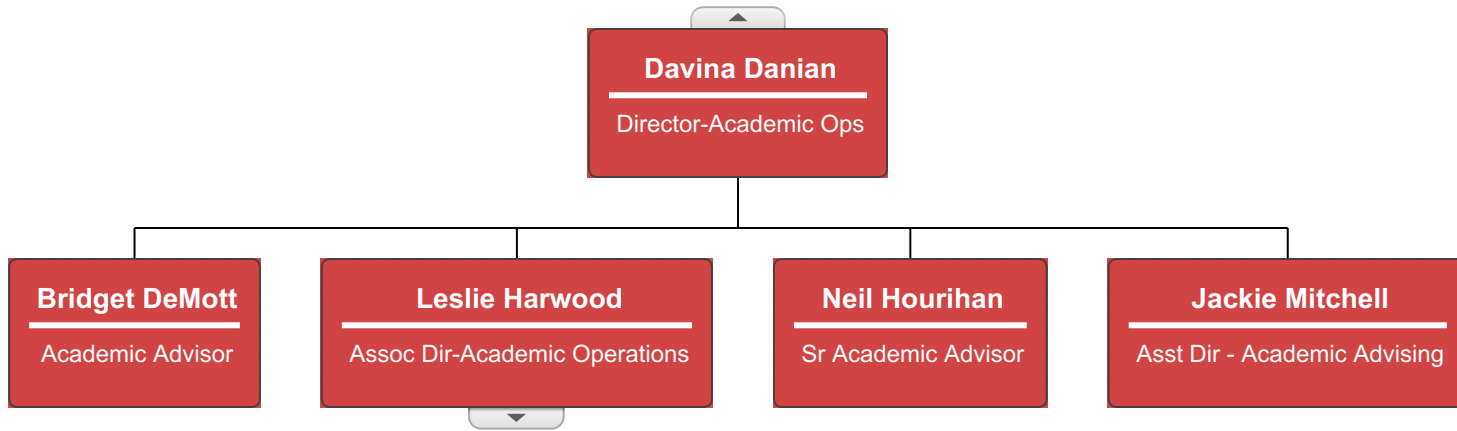
- Assistant
- Staff
- Full-Time Faculty
- Placeholder box



BOX TYPES

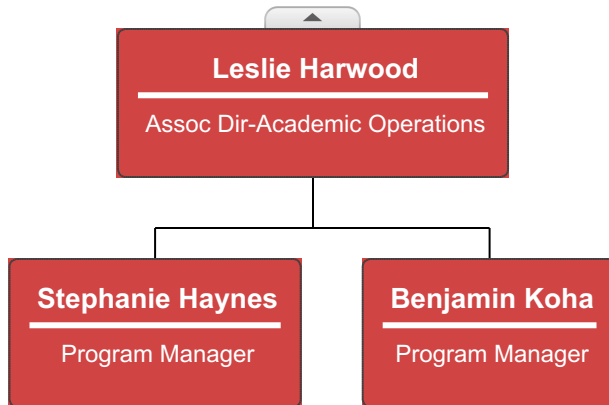
Staff
Placeholder box





BOX TYPES

Staff



The College of Professional Studies



BOX TYPES

- Full-Time Faculty
- Half-Time Faculty



The College of Professional Studies



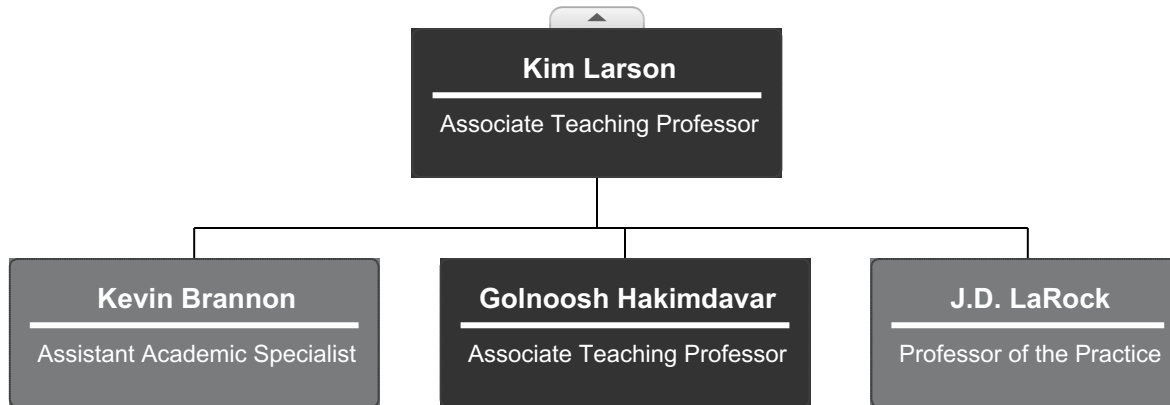
BOX TYPES

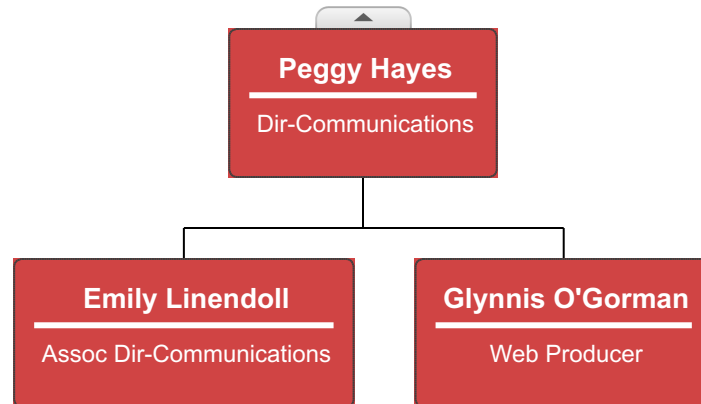
- Staff
- Full-Time Faculty
- Half-Time Faculty

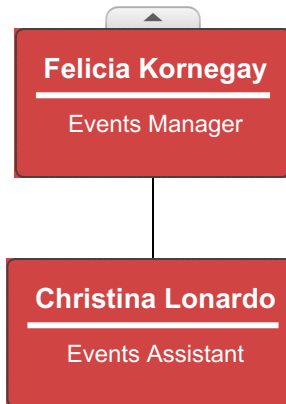


BOX TYPES

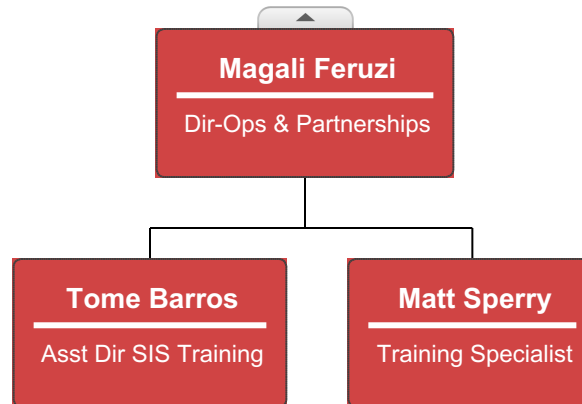
- Full-Time Faculty
- Half-Time Faculty





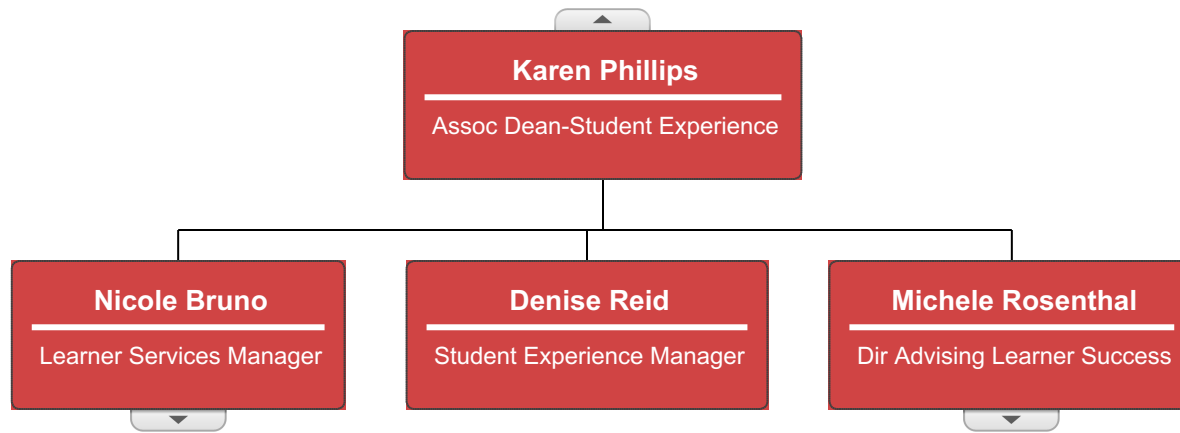






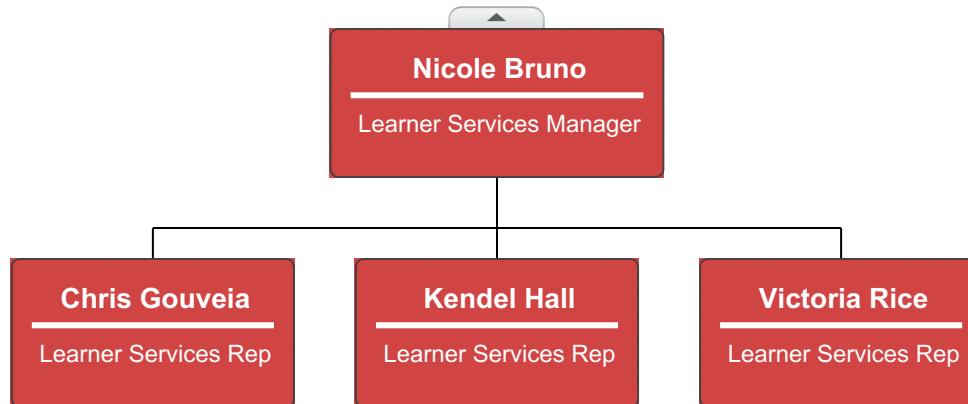
BOX TYPES

Staff



BOX TYPES

Staff

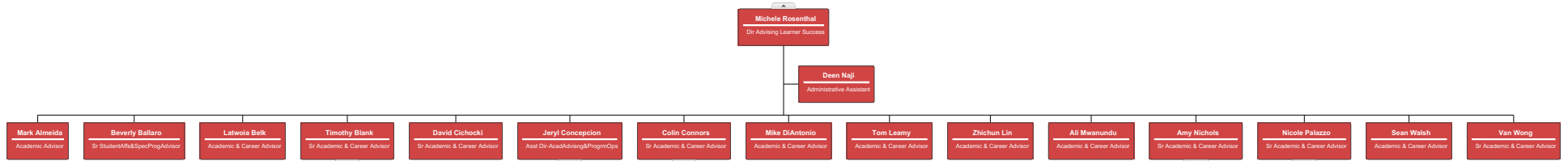


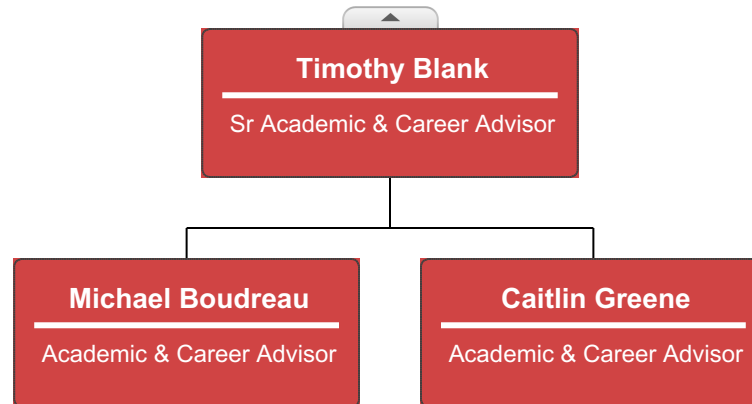
The College of Professional Studies

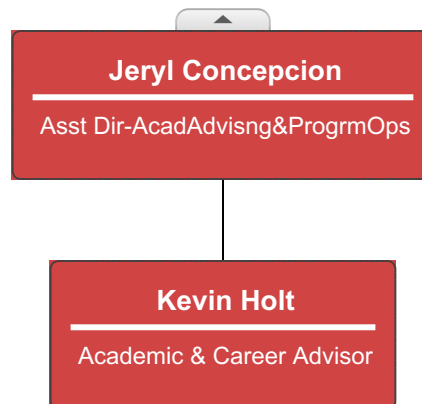


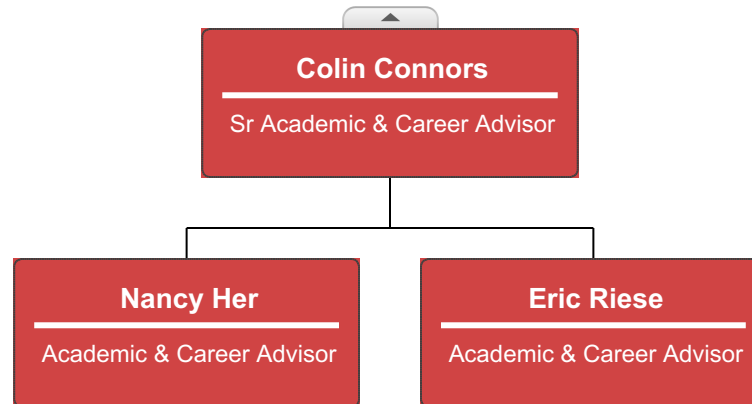
BOX TYPES

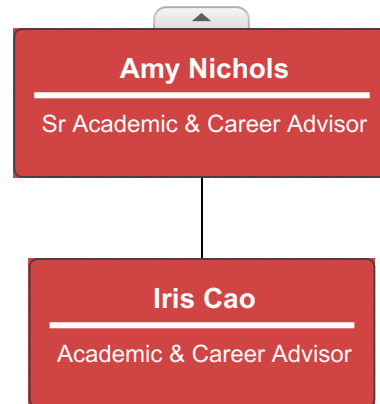
- Assistant
- Staff

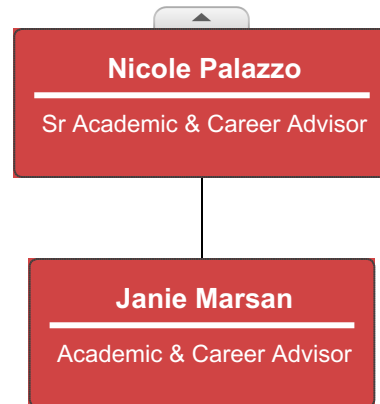










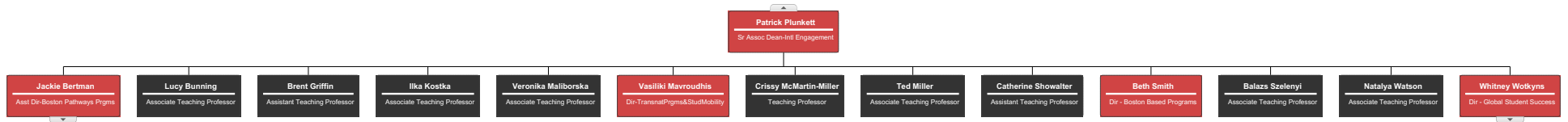


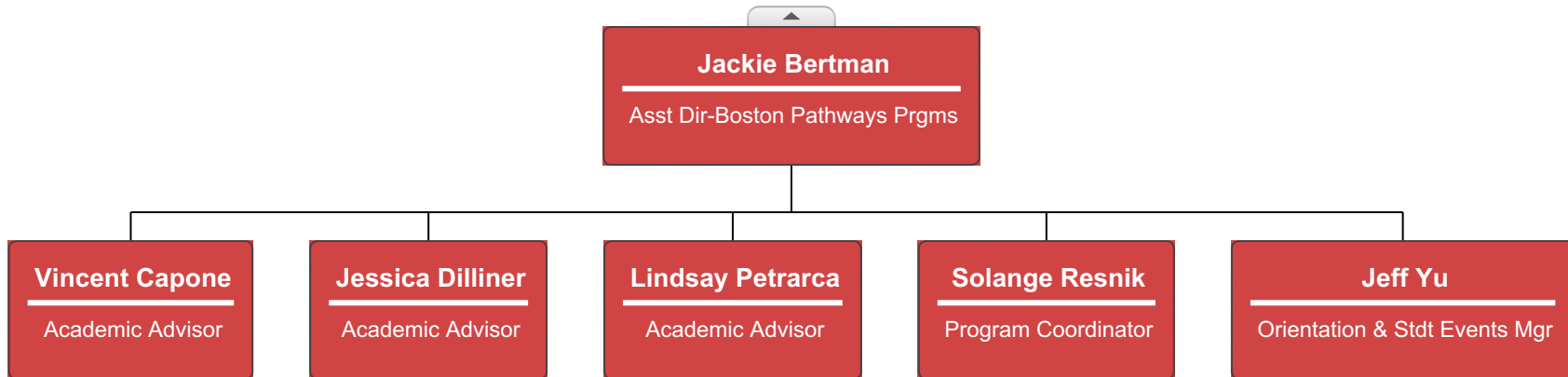
The College of Professional Studies

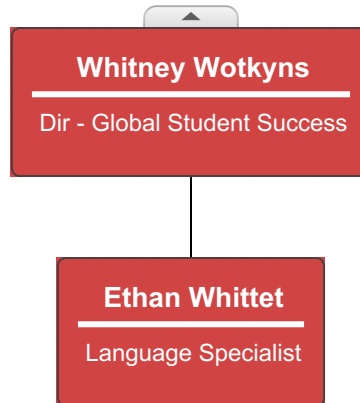


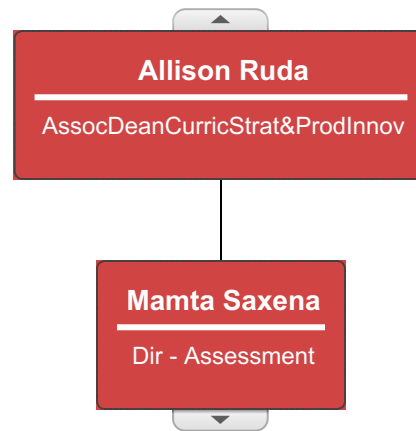
BOX TYPES

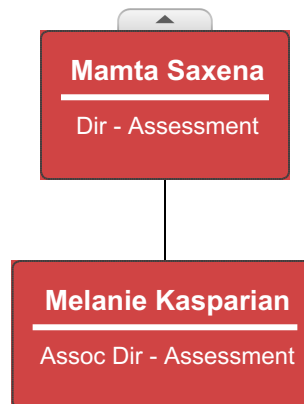
- Staff
- Full-Time Faculty











The College of Professional Studies



BOX TYPES

- Staff
- Full-Time Faculty

